



**DINOLIFT**  
**UP TO THE JOB**

Safety.  
Quality.  
Reliability.

SELF-PROPELLED DINO®  
**RXT SERIES**

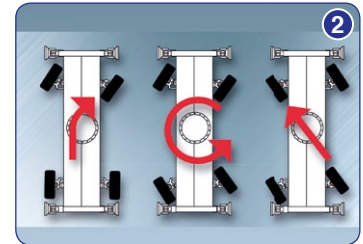
- Self-propelled RXT series
- Working heights 20.5-26.5 m
- Articulated, telescopic boom



## DINO® 205RXT / 240RXT / 265RXT

### Standard features in all DINO RXT-models:

- Oscillating front axle (picture 1)
- Four-wheel drive
- Steering 2WS/ 4WS/ Crab steering (picture 2)
- Strong engine, excellent gradeability 35%
- Great levelling capability (picture 3)

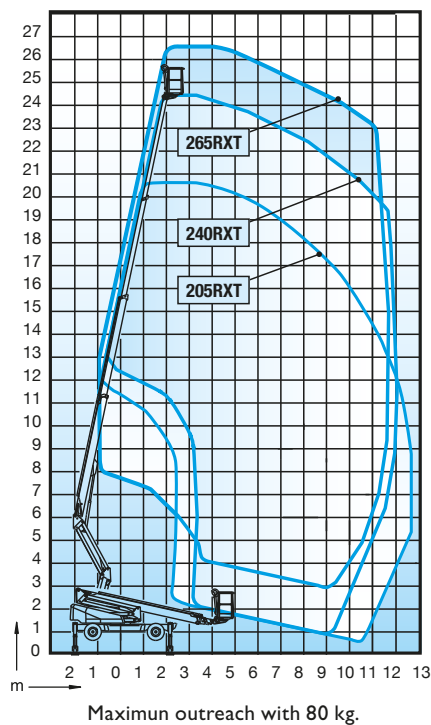


### Options available for all RXT-models:

- Electric motor for boom movements
- Automatic levelling
- Hydraulic generator 3.5 kW



### Technical data



	205RXT	240RXT	265RXT
Max. working height	20.50 m	24.00 m	26.50 m
Max. platform height	18.50 m	22.00 m	24.50 m
Max. outreach	12.60 m	12.10 m	11.70 m
Support width	3,95/4,35 m	3,95/4,35 m	3,95/4,35 m
Lifting capacity	215 kg	215 kg	215 kg
Basket size	0.7x1.3m	0.7x1.3 m	0.7 x 1.3 m
Boom rotation	cont.	cont.	cont.
Basket rotation	90°	90°	90°
Boom control	proport.	proport.	proport.
Transport length	5.85 m	6.65 m	7.17 m
Transport width	2.11 m	2.11 m	2.11 m
Transport height	2.41 m	2.41 m	2.41 m
Weight	4200 kg	4400 kg	4500 kg
Four wheel drive	std	std	std
Steering, 2WS/4WS/Crab steering	std	std	std
AC-socket in the basket x 2	std	std	std
Automatic levelling	option	option	option
Electro motor	option	option	option
Diesel power pack	std	std	std
Gradeability	35%	35%	35 %
Drive speed	4.7/1.5 km/h	4.7/1.5 km/h	4.7/1.5 km/h



## DINOLIFT

Dinolift Oy  
 Raikkolantie 145 • FI-32210 LOIMAA • FINLAND  
 Tel. +358 (0)20 1772 400 • Fax +358 (0)2 76 27 160  
[www.dinolift.com](http://www.dinolift.com)

Dinolift Oy is a Finnish company that manufactures and sells high-quality DINO aerial work platforms since 1974.

DINO platforms allow you to work above ground safely and effectively, while offering an enjoyable user experience from ground up. DINO lifts have been sold to more than 40 countries around the world, with exports accounting for 75% of production. The company's main markets are in the Nordic countries and in northern Europe.

**Technical specifications are subject to change without prior notice.**